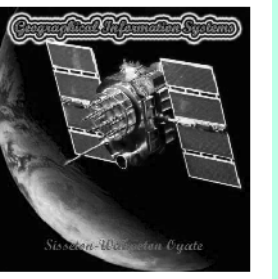


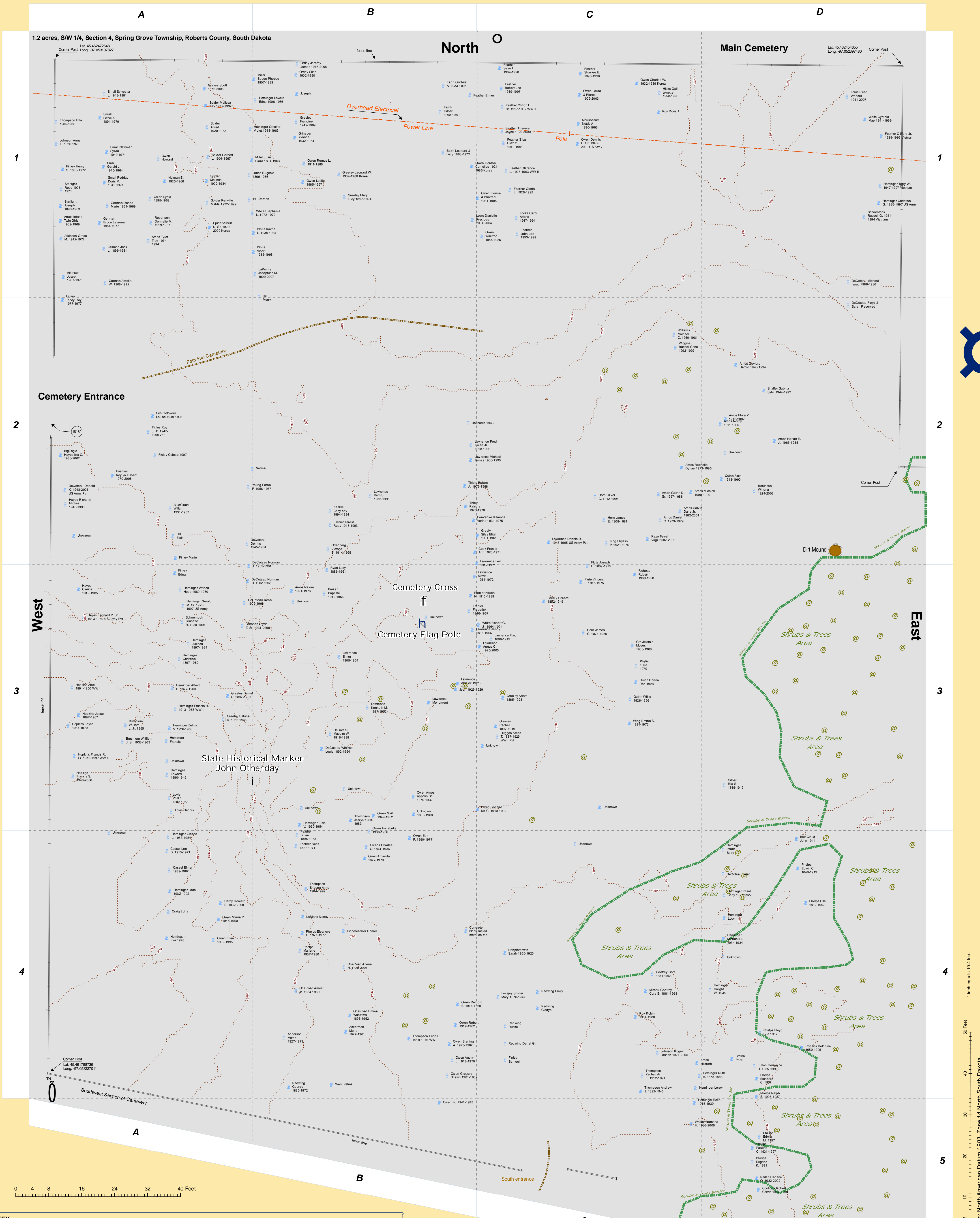
# Ascension Church Cemetery

Organized in 1868  
Church Built in 1874

The Ascension cemetery was mapped using the US Global Positioning System. Points were collected using Real-time differential correction (DGPS) from the Clarke, SD Base station. A unique Geodatabase (GIS) was created for the Ascension Church Cemetery using GPS and GIS Systems. Records and burial plotting can be done in Microsoft Access and linked with the Geographic Information Systems.



scale 1:150



**KEY**

Burial Marker & GPS Location	Trees	Cemetery Corner Post	Cemetery Cross Monument	Paths	Electric Line	Cemetery Area
John Otherday Historical Marker	Cemetery Flag Pole	Utility Pole	Cemetery Cross Monument	Fence Line	Contours	Cemetery Area
	Tree and Shrub Boundary	Ditch	Cemetery Cross Monument	Paths	Electric Line	Cemetery Area

## Burial Listing



1 inch equals 10.4 feet  
Projection: North American Datum 1983, Zone 14 North Dakota